

ANNE PRO 2 UserManual V1.1

obins



ANNE PRO 2 UserManual V1.1

ANNE PRO 2

1. Connect
 - 1.1 Connect over USB Cable
 - 1.2 Connect over Bluetooth
2. Basic Function
 - 2.1 F1~ F12
 - 2.2 Direction Keys
 - 2.3 Other Keys
 - 2.4 TAP Layout
 - 2.5 Magic Fn
3. Light Control
4. Setup bluetooth
 - 4.1 Turn on Bluetooth broadcast
 - 4.2 Switch Host
 - 4.3 Bluetooth pairing with Windows 8/10
 - 4.3.1 Check if your computer supports BLE
 - 4.3.2 Pair with keyboard
 - 4.4 Bluetooth pairing with Mac OS X
5. Technical Parameters

ObinsLab Starter

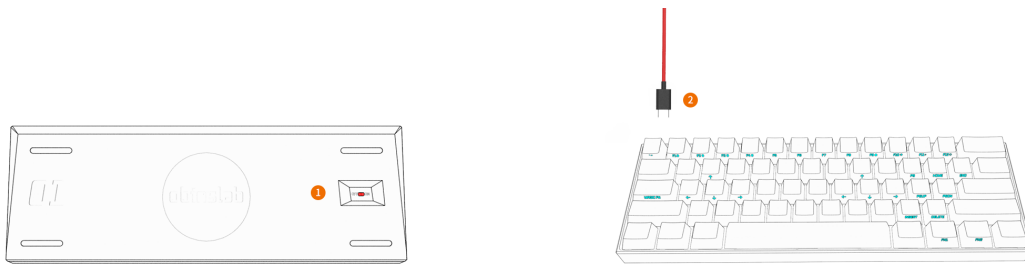
1. Getting Started
 - 1.1 Supported Platforms
 - 1.2 Installation
 - 1.3 Start Up
 - Windows
 - Mac OS X
2. Qick Guide
 - 2.1 Device List
 - 2.2 Keyboard Setting
 - 2.3 Layout Setting
 - 2.4 Light Setting
 - 2.5 Macro Setting
- 3 Firmware Upgrade
 - 3.1 ANNE PRO 2
 - 3.1 ANNE PRO

ANNE PRO 2

ANNE PRO 2 is a 60% size bluetooth RGB mechanical keyboard, it's smart and save the space of the desk. Although it only have 61 keys, it can used like a stand 104 keys keyboard by key combination.

1. Connect

1.1 Connect over USB Cable



Connect Steps:

1. Turn off the Bluetooth switch on the back of the keyboard
2. Connect your computer with a USB cable

1.2 Connect over Bluetooth

1. Turn on the Bluetooth switch on the back of the keyboard
2. Operate steps on computer, please refer to Chapter 4

2. Basic Function

2.1 F1~ F12

ANNE PRO 2 provide F1 ~ F12



$$\text{F1} = \text{FN1} + 1$$

$$\text{F2} = \text{FN1} + 2$$

$$\text{F3} = \text{FN1} + 3$$

$$\text{F4} = \text{FN1} + 4$$

$$\text{F5} = \text{FN1} + 5$$

$$\text{F6} = \text{FN1} + 6$$

$$\text{F7} = \text{FN1} + 7$$

$$\text{F8} = \text{FN1} + 8$$

$$\text{F9} = \text{FN1} + 9$$

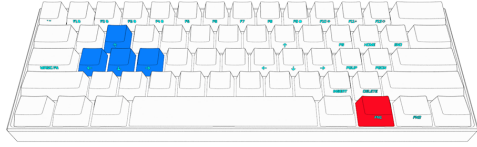
$$\text{F10} = \text{FN1} + 0$$

$$\text{F11} = \text{FN1} + -$$

$$\text{F12} = \text{FN1} + +$$

2.2 Direction Keys

ANNE PRO 2 provide two groups of direction keys



FN1 + W = ↑

FN1 + A = ←

FN1 + S = ↓

FN1 + D = →

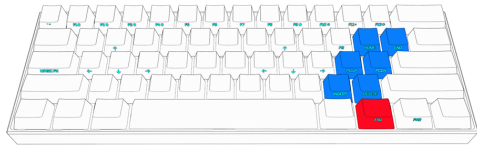
FN1 + I = ↑

FN1 + J = ←

FN1 + K = ↓

FN1 + L = →

2.3 Other Keys



FN1 + O = SCROOL LOCK

FN1 + P = PAUSE BREAK

FN1 + \ | = PRINT SCREEN

FN1 + : ; = PAGE UP

FN1 + ' " = PAGE DOWN

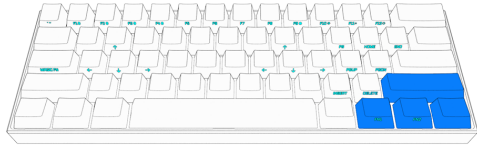
FN1 + . > = INSERT

FN1 + / ? = DELETE

FN1 + [{ = HOME

FN1 +] } = END

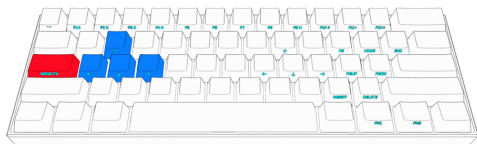
2.4 TAP Layout



For default, ANNE PRO 2 turn the Tap Layout on, and set `Right Shift` for `↑`, `FN1` for `←`, `FN2` for `↓` and `Righ Control` for `→`. So for example, when click `Right Shift` alone, the function will be `↑`.

You can completely customize your TAP Layout, or turn it off . Setup guide, please refer to **Layout Setting**

2.5 Magic Fn



Magic Fn can be the copy of FN1 or FN2. By default, Magic Fn is off. To enable it, please refer to the guide of Obinslab Starter at chapter 2.2

3. Light Control

ANNE PRO 2 presets a variety of lighting effects.

To custom your own light effect/ effect group, please refer to the guid of Obinslab Starter



FN2 + 9 = Switch Light

FN2 + 0 = Trun Backlight On/Off

FN2 + - = Reduce Backlight Brightness

FN2 + + = Increase Backlight Brightness

4. Setup bluetooth

Before starting the next steps below, please confirm that the Bluetooth switch is at position **On**.

Detail about turn on the Bluetooth switch, please refer to Chapter 1.2



4.1 Turn on Bluetooth broadcast

Connect ANNE PRO 2 to a new host (Computer, Mobile, Pad etc), need Bluetooth pairing. To do this, need turn on Bluetooth broadcast first.

FN2 + **1** (5 Seconds) = Turn on Bluetooth broadcast on position 1

FN2 + **2** (5 Seconds) = Turn on Bluetooth broadcast on position 2

FN2 + **3** (5 Seconds) = Turn on Bluetooth broadcast on position 3

FN2 + **4** (5 Seconds) = Turn on Bluetooth broadcast on position 4

4.2 Switch Host

Connect or switch ANNE PRO 2 to a paired host

FN2 + **1** = Switch to host saved on position 1

FN2 + **2** = Switch to host saved on position 2

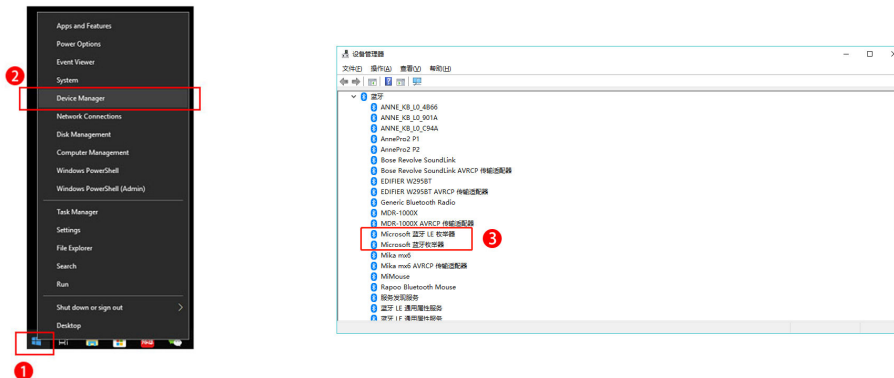
FN2 + **3** = Switch to host saved on position 3

FN2 + **4** = Switch to host saved on position 4

4.3 Bluetooth pairing with Windows 8/10

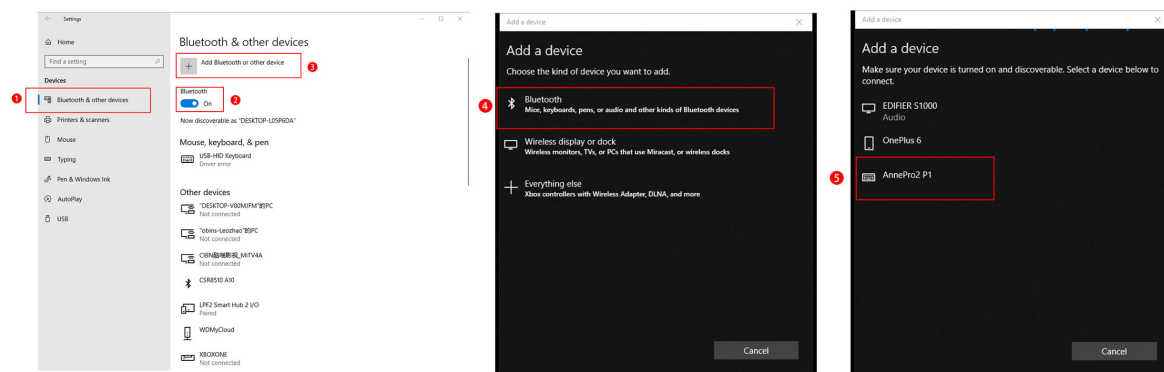
4.3.1 Check if your computer supports BLE

If your computer does not support BLE, please purchase an adapter that supports BLE4.0.



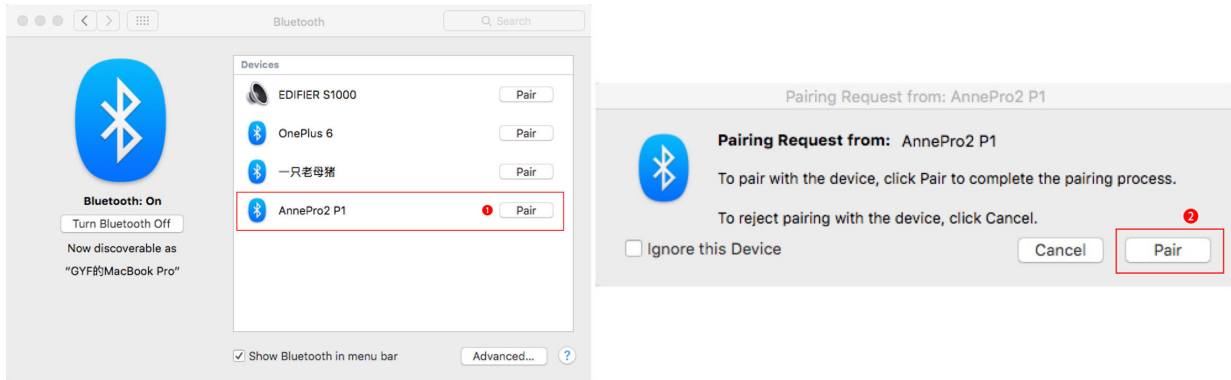
1. Right click on the **windows** icon
2. Select **Device Manager**
3. If a **MicroSoft Bluetooth Enumerator** device is present, it means that the Bluetooth module supports BLE devices. If not, you need to purchase an adapter that supports BLE 4.0

4.3.2 Pair with keyboard



1. Right click on the **windows** icon, select menu **Setting**
2. Select menu **Bluetooth & other devices**
3. Open the Bluetooth switch
4. Click **Add Bluetooth or other device**
5. Click **Bluetooth**
6. Select AnnePro2 to pair, wait 5-10s to complete binding

4.4 Bluetooth pairing with Mac OS X



1. Open Bluetooth setting window, click `Pair` button to pair with AnnePro2
2. Click `Pair` on pairing request window

5. Technical Parameters

Item	Parameters
Wired	USB (Windows 7/8/10、 Mac、 Linux)
Wireless	Bluetooth LE 4.0 (Windows 8/10、 Mac、 Linux)
Size	97 * 284 * 40mm
Weight	635g
Battery	1900mAh
USB Input Voltage	5V DC
USB Working Current	500mA Max
Screw	Torx T5 M2*9.5mm

ObinsLab Starter

Obinslab Starter is a PC tool for ANNE PRO 2

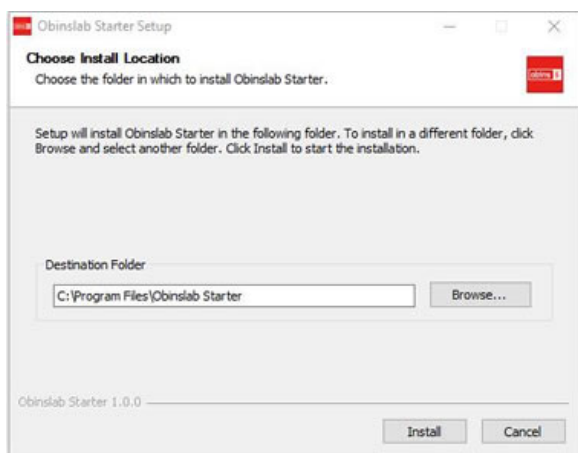
1. Getting Started

1.1 Supported Platforms

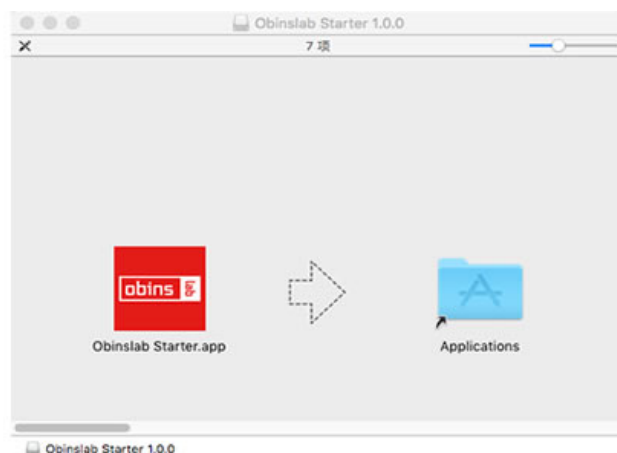
System	32bit	64bit
Windows 7	√	√
Windows 8	√	√
Windows 10	√	√
Mac OS X	-	√
Ubuntu	-	√

1.2 Installation

1. Download the installation package: <http://www.obins.net/occ/>
2. Install



Windows



Mac OS X

1.3 Start Up

The function of macro record need a special authorization, and some anti-virus software may block it, please choose trust it.

Tips: Please always download **Obinslab Starter** from <http://www.obins.net/obinslab-starter>, we can not guarantee the security of software downloaded from other channels.

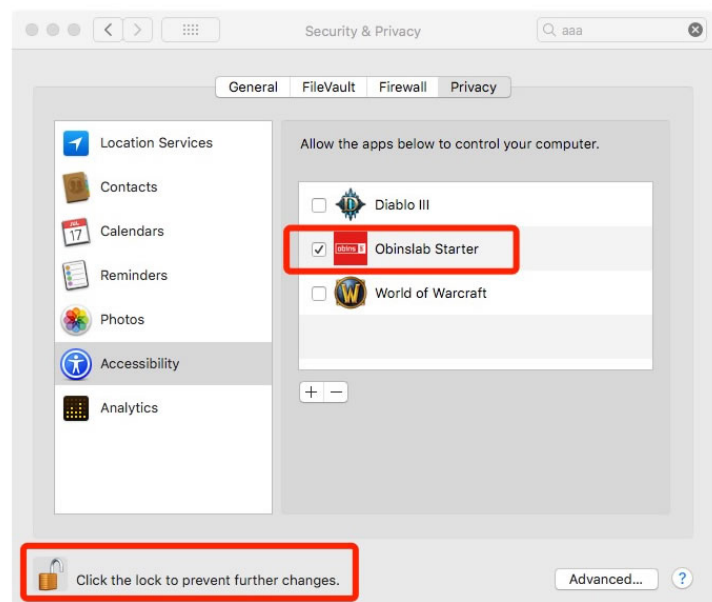
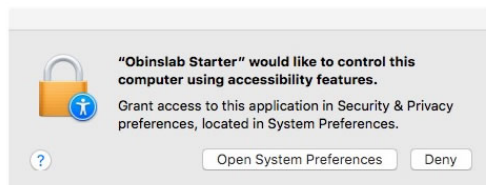
Windows

Click the shortcut on the desktop



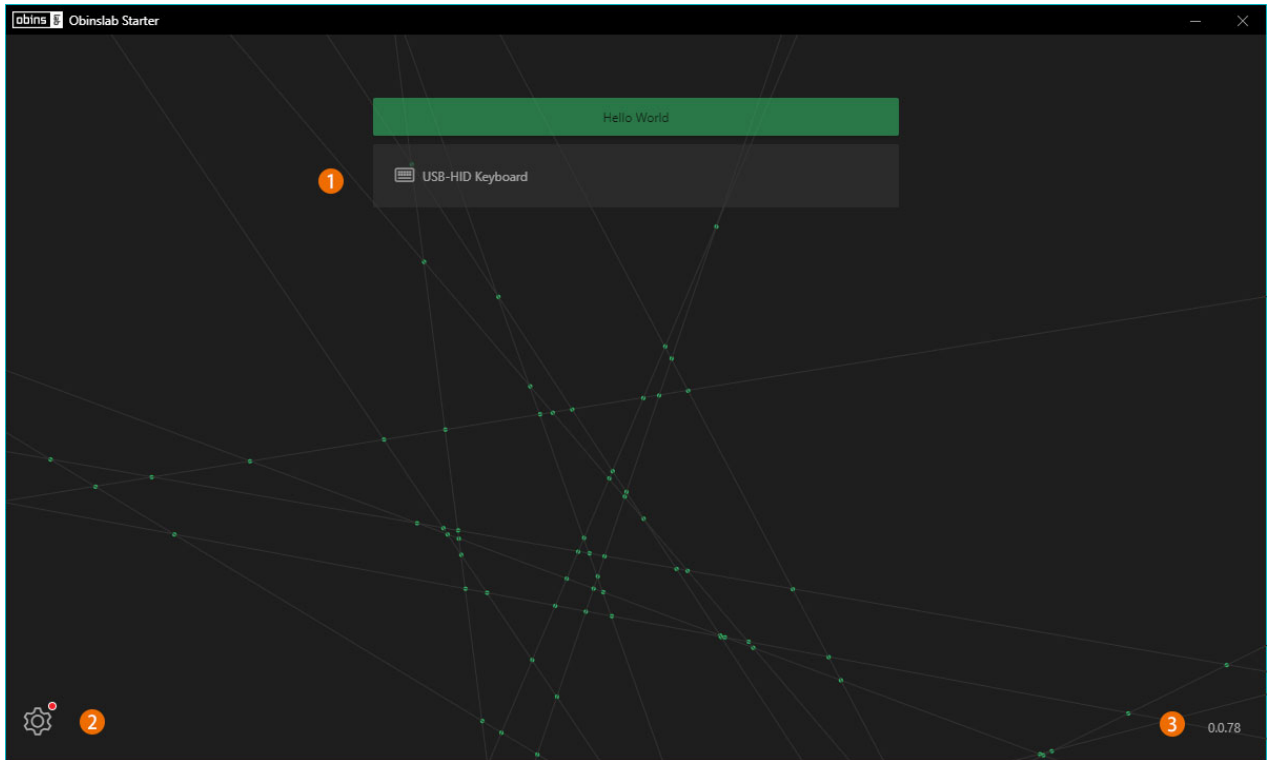
Mac OS X

The first time launch Obinslab Starter, you will see the alert below, please authorize Obinslab Starter by clicking `Open System Preferences` in the alert, then selecting the checkbox for Obinslab Starter in the `Privacy` pane.



2. Qick Guide

2.1 Device List



1. **Device List**

Devices connected over USB cable.

Click **Hello World** to refresh device list(This usually does not need).

2. **Setting**

Switch Language

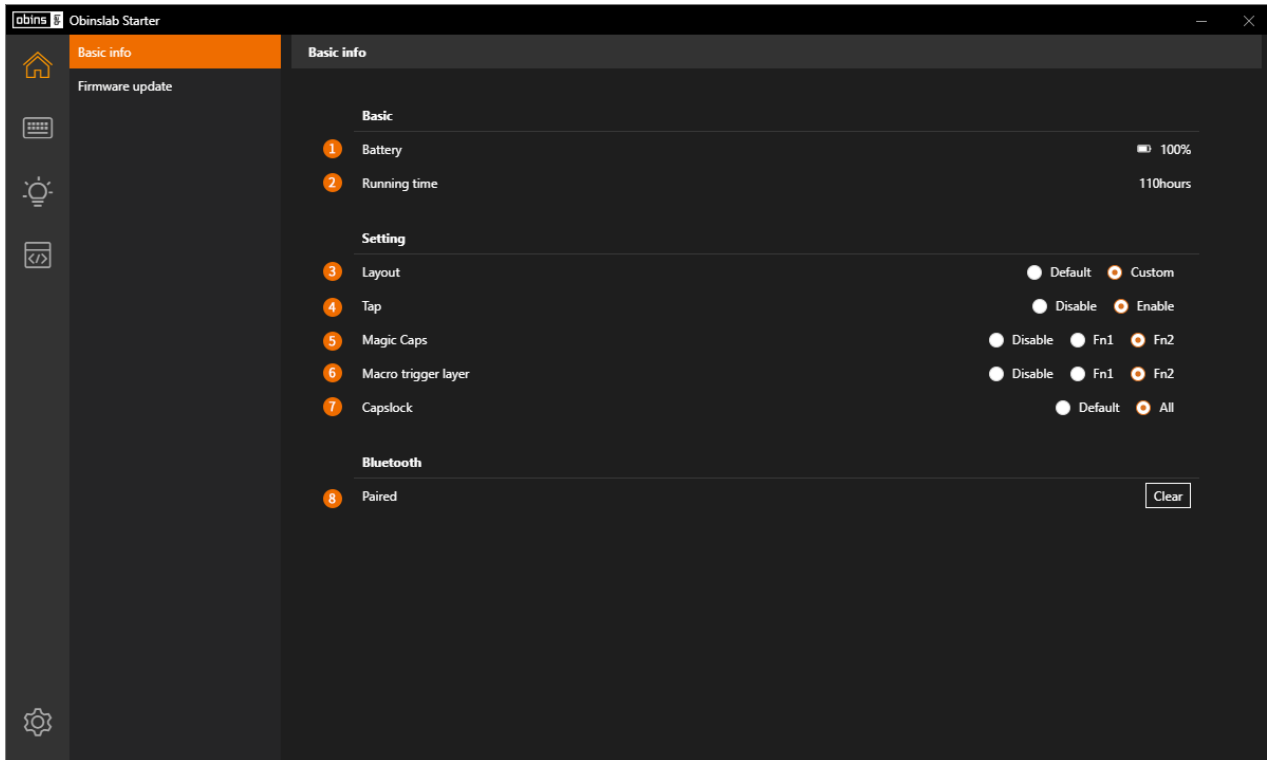
Switch Theme

Software update

3. **Software Version**

The current version of Obinslab Starter

2.2 Keyboard Setting

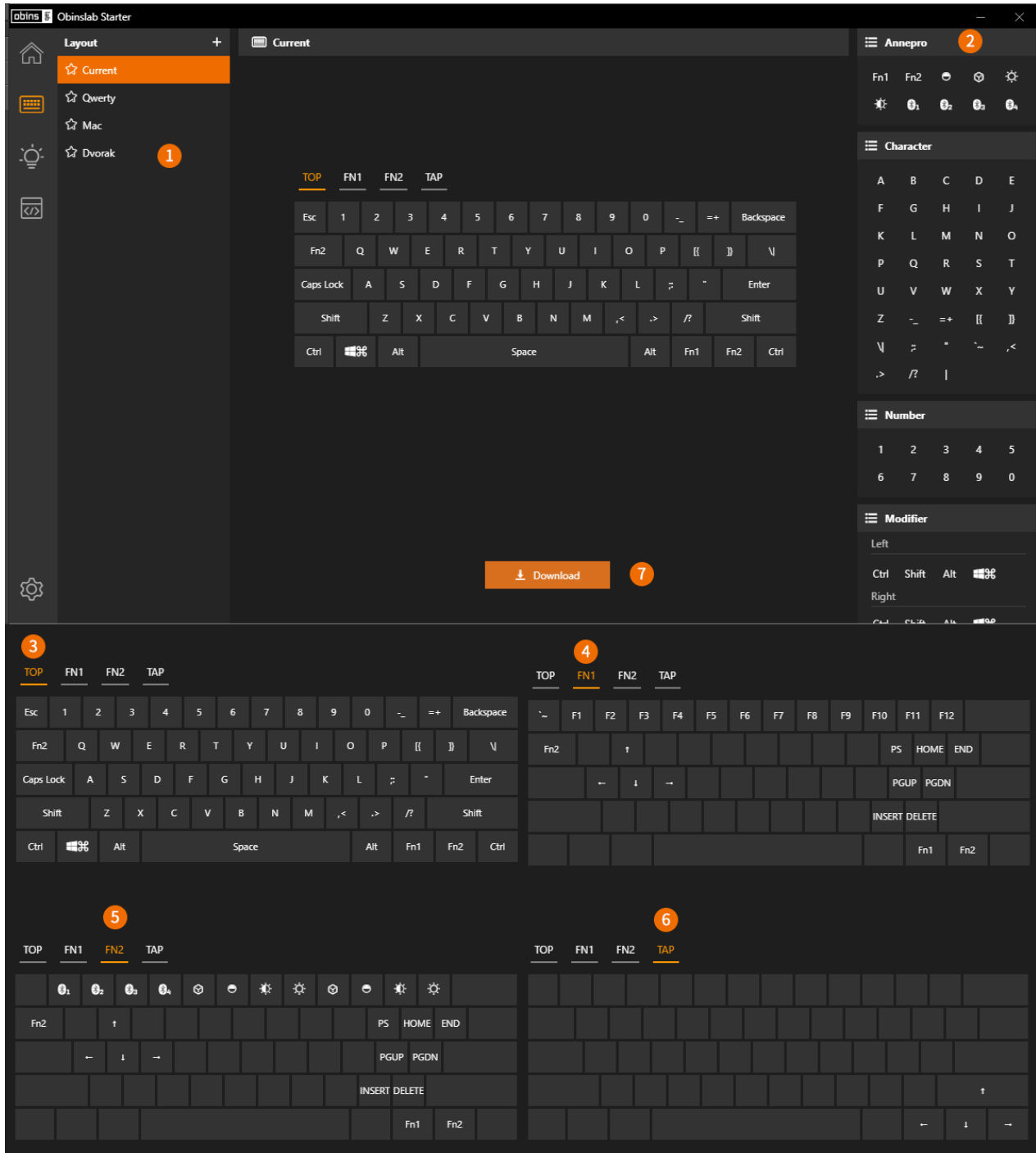


Information and general setting for the keyboard

1. **Battery:** Battery indicator
2. **Running Time:** Keyboard running time statistics
3. **Layout**
Default: Default keyboard layout
User: User customized keyboard layout
4. **Tap**
Disable: Turn off keyboard TAP layout.
Enable: Turn on keyboard TAP layout.
5. **Magic Fn**
Disable: Turn off Magic Fn
Fn1: Set Magic Fn to a copy of Fn1
Fn2: Set Magic Fn to a copy of Fn2
6. **Macro**
Disable: Turn off Macro.
Fn1: Set Fn1 to the hold key for trigger a Macro
Fn2: Set Fn2 to the hold key for trigger a Macro
7. **CapsLock Led**
Disable: Set CapsLock Led to default. If CapsLock on, led of CapsLock key will on.
All: If CapsLock on, led of all keycaps will on.

8. **Reset Bluetooth:** Clear Bluetooth bound info saved on keyboard.

2.3 Layout Setting



1. Layout

Current: Layout read from keyboard. Qwerty, Mac, Dvorak: Preset layout.

- Click on icon **+** to add a new layout
- Right click on **Current** to **Copy**
- Right click on preset layout to **Copy/Recover**(set to default)
- Right click on user layout(added/copied) to **Copy/Delete/Rename**
- Double click on user layout to **Rename**(Enter for save, Esc for cancel)

2. Key code table

Here list HID Key Code and ANNE PRO 2 special function keys

3. **TOP**

The default layout, tap to trigger

4. **FN1**

Hold Fn1 to trigger

5. **FN2**

Hold Fn2 to trigger

6. **TAP**

Usually set key code on modifier key to extend it.

To use TAP, non't forget to enable TAP option at keyboard setting page

7. **Download**

Download the selected layout to keyboard.

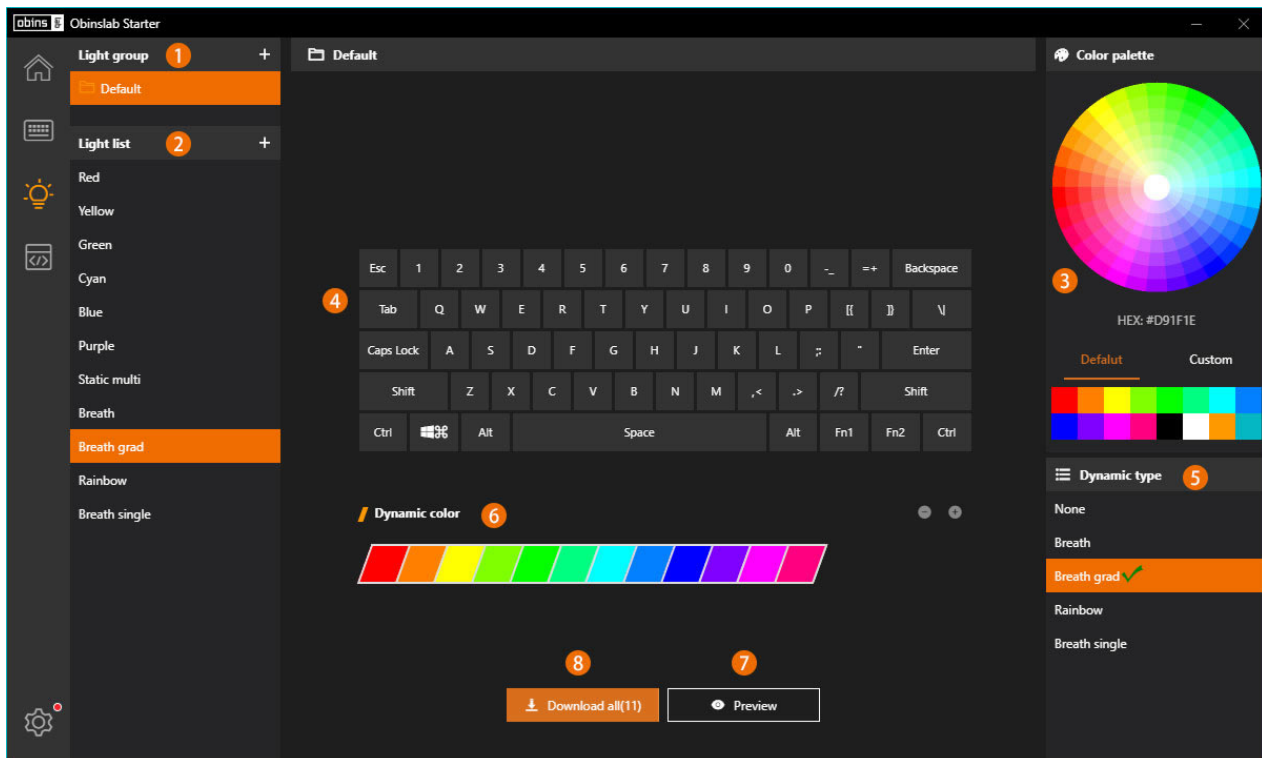
If layout is seated to "Default", download a layout will rewrite it to "User" automatically

ANNE PRO 2 have four layers, they are TOP、FN1、FN2、TAP.

There are two ways to update keycode:

- Drag the selected keycap, and drop on another keycap
- Select a keycap, choose new from **Key code table

2.4 Light Setting



1. Light Group

- Click on icon **+** to add light group
- Right click on **custom** light group item to **Delete /Rename / Copy**
- Right click on the **Default** light group to **Copy / Recover**(set to default)

2. Light List

- Click on icon **+** to add light effect(Limited to max 16)
- Click on light effect to **Rename / Copy / Delete**
- Right click on blank space to **Paste** the light effect copied
- Drag the light effect to sort

3. Color Palette

- Pick color on the color wheel
- Pick color from **Default/Custom** color block
- Right click on custom color block to save the current color

4. Setting Static Light

Setting static single or static multiple light effect:

- Select single/multiple keycap, and then pick a color on **Color Palette**
- Click on blank space to clear selected keycaps

5. Dynamic Light Effect

- None: Static light effect, RGB backlights on every keycap can be defined
- Breath/Breath grad/Rainbow/Breath single: Work together on **Dynamic Light Color Table**

6. Dynamic Light Color Table

Setting color for **Dynamic Light Effect**

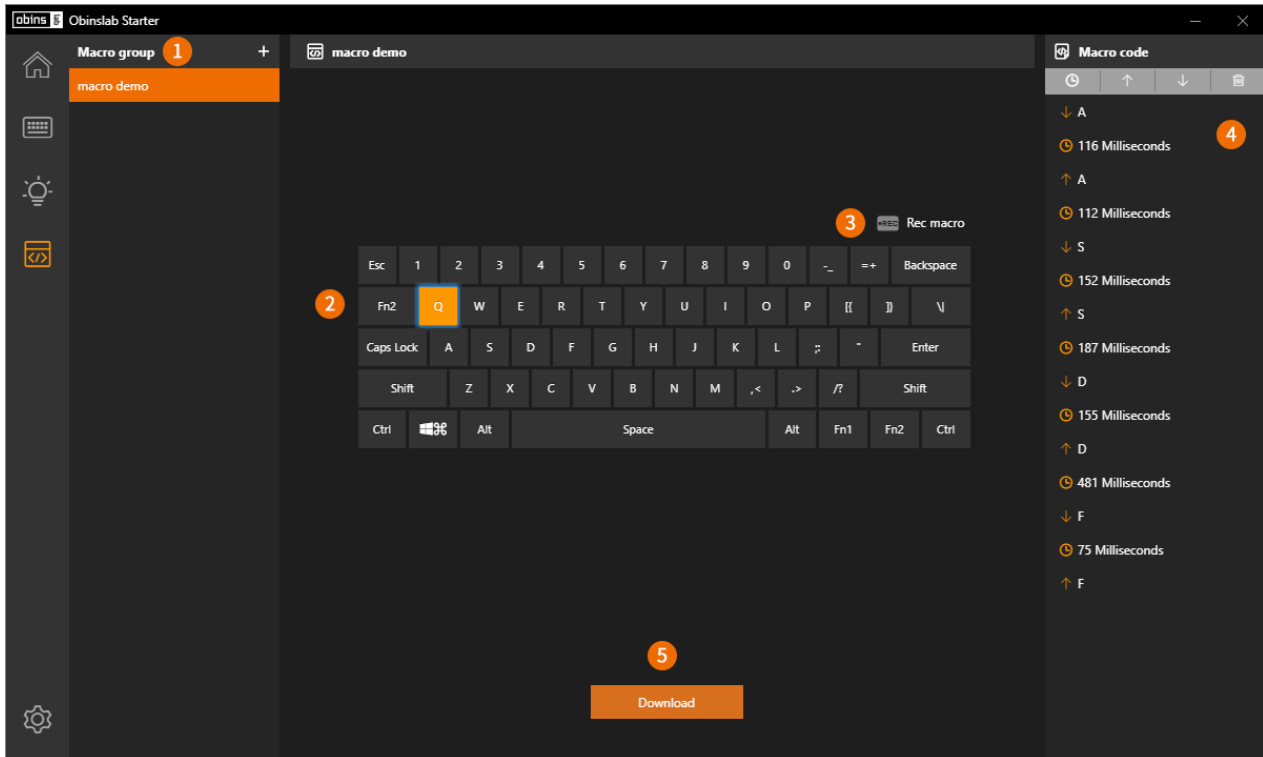
7. **Preview**

Preview the selected light effect on keyboard

8. **Download All**

Download the light effects listed in the selected light group to keyboard

2.5 Macro Setting



1. Macro Group

- Click on icon **+** to add macro group
- Right click on macro group to **Remane/Copy/Delete**
- Double click on macro group to **Rename**

2. Macro Key

Indicate the macro trigger position

- Click on a blank keycap to **Paste/Add** macro(Limited to max 16)
- Click on macro keycap to select a macro
- Right click on macro keycap to **Delete/Copy/Paste**
- Drag on the macro keycap and drop on a blank keycap to update macro trigger position

3. Rec Macro

Record a macro, the keycode typed in will show at **Macro code**

4. Macro Code

Show the macro code of selected

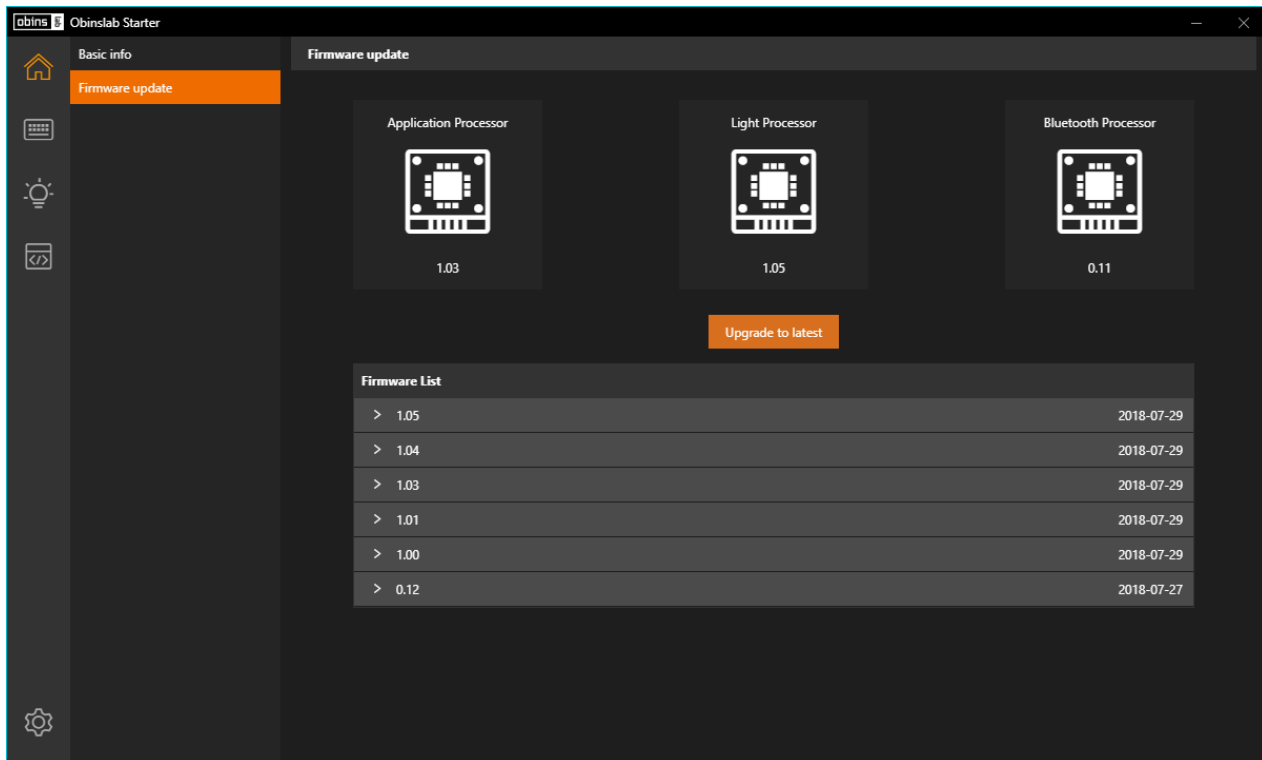
- Insert time block
- Move up/down the macro code block
- Double click on time block to edit time(Enter for save, Esc for cancel)
- Delete macro code block

5. Download

Download the macros listed in the selected macro group to the keyboard

3 Firmware Upgrade

3.1 ANNE PRO 2



In this page, you will get a list of firmware.

For a better experience, we recommend upgrading to the latest.

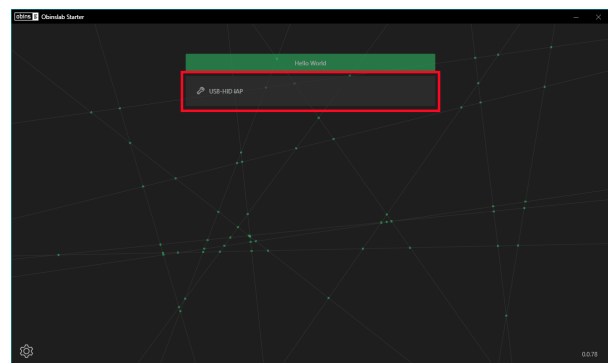
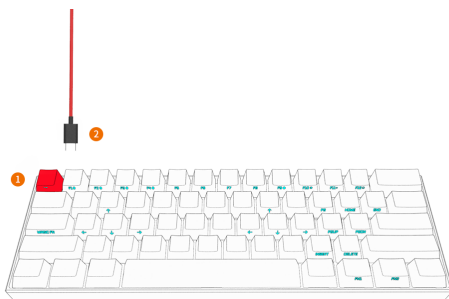
- **Upgrade to latest**

It's quite simple, just click the "Upgrade to Latest" button, what't all.

- **Abnormal recovery**

If an accident(e.g. power failure, reboot, computer crash, and other unpredictable situations) occurs during the firmware upgrade, the keyboard can't be used.

In this situation, you can use the abnormal recovery mode to recover the keyboard.



1. Turn off the Bluetooth switch on the back of the keyboard
2. Hold on Esc, plug in the USB cable. Release Esc key while "USB-HID IAP" show up on the screen
3. Select "USB-HID IAP" item to upgrade firmware again

- **Experimental Features**

1. Turn option **Upgrade Source** to **Development** in the software setting page
2. Restart Obinslab Starter and check firmware list again

3.1 ANNE PRO

Comming soon

FCC Caution:

This device complies with part 15 of the FCC Rules. Operation is subject to the following two conditions: (1) This device may not cause harmful interference, and (2) this device must accept any interference received, including interference that may cause undesired operation.

Any Changes or modifications not expressly approved by the party responsible for compliance could void the user's authority to operate the equipment.

Note: This equipment has been tested and found to comply with the limits for a Class B digital device, pursuant to part 15 of the FCC Rules. These limits are designed to provide reasonable protection against harmful interference in a residential installation. This equipment generates uses and can radiate radio frequency energy and, if not installed and used in accordance with the instructions, may cause harmful interference to radio communications. However, there is no guarantee that interference will not occur in a particular installation. If this equipment does cause harmful interference to radio or television reception, which can be determined by turning the equipment off and on, the user is encouraged to try to correct the interference by one or more of the following measures:

- Reorient or relocate the receiving antenna.
- Increase the separation between the equipment and receiver.
- Connect the equipment into an outlet on a circuit different from that to which the receiver is connected.
- Consult the dealer or an experienced radio/TV technician for help.

The device has been evaluated to meet general RF exposure requirement. The device can be used in portable exposure condition without restriction.